

Electromagnetic Net Capture & Patrol Robot Dog

The Electromagnetic Net-Enabled Patrol and Capture Robotic Dog is a groundbreaking security solution that combines electromagnetic ejection technology with embodied artificial intelligence. As the world's first security product to deeply integrate AI recognition with electromagnetic launch capabilities, it represents a significant advancement from simple identification to active control in intelligent security systems. Designed for critical site protection, dangerous target apprehension, and emergency response operations, this robotic dog features intelligent patrols, panoramic surveillance, threat detection and early warning systems, as well as automatic net deployment functions. Its smart identification and secure control capabilities significantly improve public safety incident response efficiency while reducing risks to both civilians and law enforcement personnel.

During emergencies, the robotic dog serves as a mobile response platform that can autonomously detect unauthorized intrusions or aggressive behaviors, proactively launch restraining nets to control targets, and minimize human exposure to potentially dangerous situations. This innovative technology marks a new era in intelligent security by transforming passive monitoring into active protection.



Features & Specifications

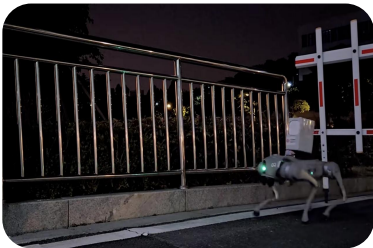
- **Compliant with the GA510-2004 Police Capture Net industry standard.**
- **Safe, reliable, and harmless, it is user-friendly and highly efficient.**
- **Featuring infrared targeting and image-guided auto-aiming for specific targets or body parts.**
- **Equipped with intelligent robotic dog visual tracking, enabling image recognition, target following, dangerous behavior analysis, and early warning.**
- **Simple to operate with wireless accompaniment, supporting voice command control, short-range wireless tracking and positioning, as well as companion follow mode.**
- **Laser navigation: Integrated with LiDAR for path planning, 3D mapping, autonomous patrol, and remote control.**
- **Motion control: Capable of obstacle crossing, approaching targets, blocking threats, and protecting others.**



Technical Specifications

Section	Parameter Type	Details
Electromagnetic Net Capture Device	Product Form	Robot Dog Carrying
	Projectile Type	Ultra-High Molecular Weight Polyethylene Net
	Number of Tethers	4
	Effective Capture Range	5-10 m
	Maximum Firing Count	>500 shots
	Shots per Charge	≥50 shots
	Mesh Size	≤200mm (diagonal length)
	Net Deployment Area	2.4×2.4 m
	Operating Temperature	-10°C to 55°C
	Weight	Robotic Dog: ~15kg; Net Launcher: ~1.3kg
	Configuration List	1 charger, 1 main unit, 3 nets, 1 carrying case
Robot Dog	Functional Capabilities	<ul style="list-style-type: none">▪ Wireless Following;▪ Remote Operation;▪ LiDAR Navigation;▪ Stair Climbing ;▪ Smart Obstacle Avoidance▪ Voice Control▪ Visual Tracking▪ Path Planning▪ Intelligent Early Warning

Application Scenarios



24/7 Automated Patrol



Security Protection for Large-Scale Events



Emergency Incident Response

